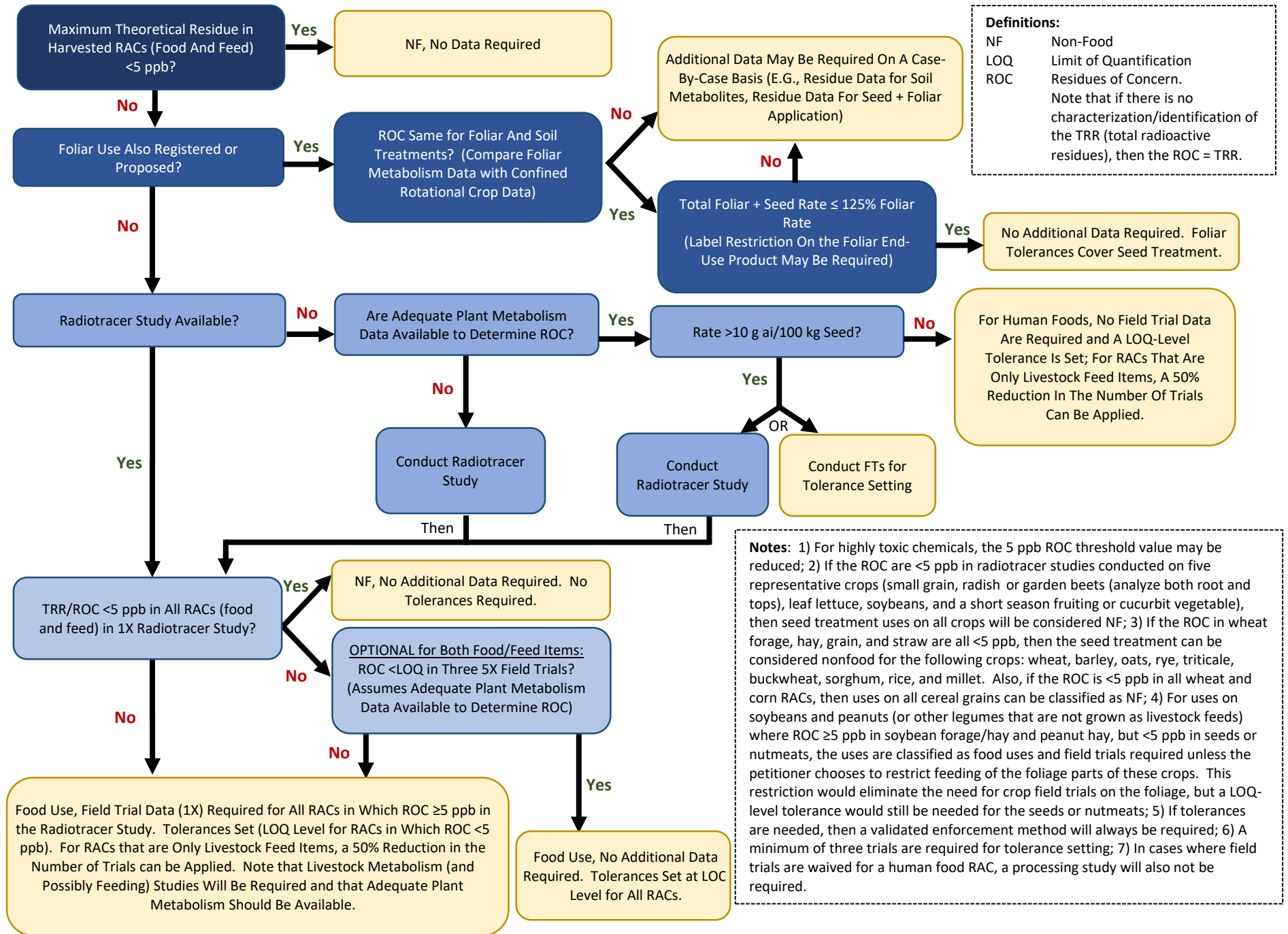


**Appendix 1: Decision Tree for Seed Treatment (Excluding Potato Seed-Piece Treatment)**



**Definitions:**  
 NF Non-Food  
 LOQ Limit of Quantification  
 ROC Residues of Concern.  
 Note that if there is no characterization/identification of the TRR (total radioactive residues), then the ROC = TRR.

**Notes:** 1) For highly toxic chemicals, the 5 ppb ROC threshold value may be reduced; 2) If the ROC are <5 ppb in radiotracer studies conducted on five representative crops (small grain, radish or garden beets (analyze both root and tops), leaf lettuce, soybeans, and a short season fruiting or cucurbit vegetable), then seed treatment uses on all crops will be considered NF; 3) If the ROC in wheat forage, hay, grain, and straw are all <5 ppb, then the seed treatment can be considered nonfood for the following crops: wheat, barley, oats, rye, triticale, buckwheat, sorghum, rice, and millet. Also, if the ROC is <5 ppb in all wheat and corn RACs, then uses on all cereal grains can be classified as NF; 4) For uses on soybeans and peanuts (or other legumes that are not grown as livestock feeds) where ROC ≥5 ppb in soybean forage/hay and peanut hay, but <5 ppb in seeds or nutmeats, the uses are classified as food uses and field trials required unless the petitioner chooses to restrict feeding of the foliage parts of these crops. This restriction would eliminate the need for crop field trials on the foliage, but a LOQ-level tolerance would still be needed for the seeds or nutmeats; 5) If tolerances are needed, then a validated enforcement method will always be required; 6) A minimum of three trials are required for tolerance setting; 7) In cases where field trials are waived for a human food RAC, a processing study will also not be required.