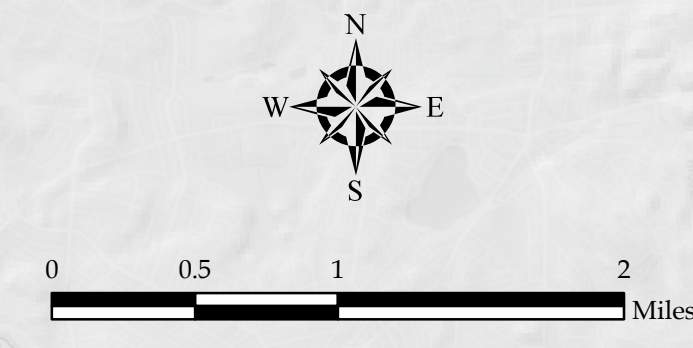
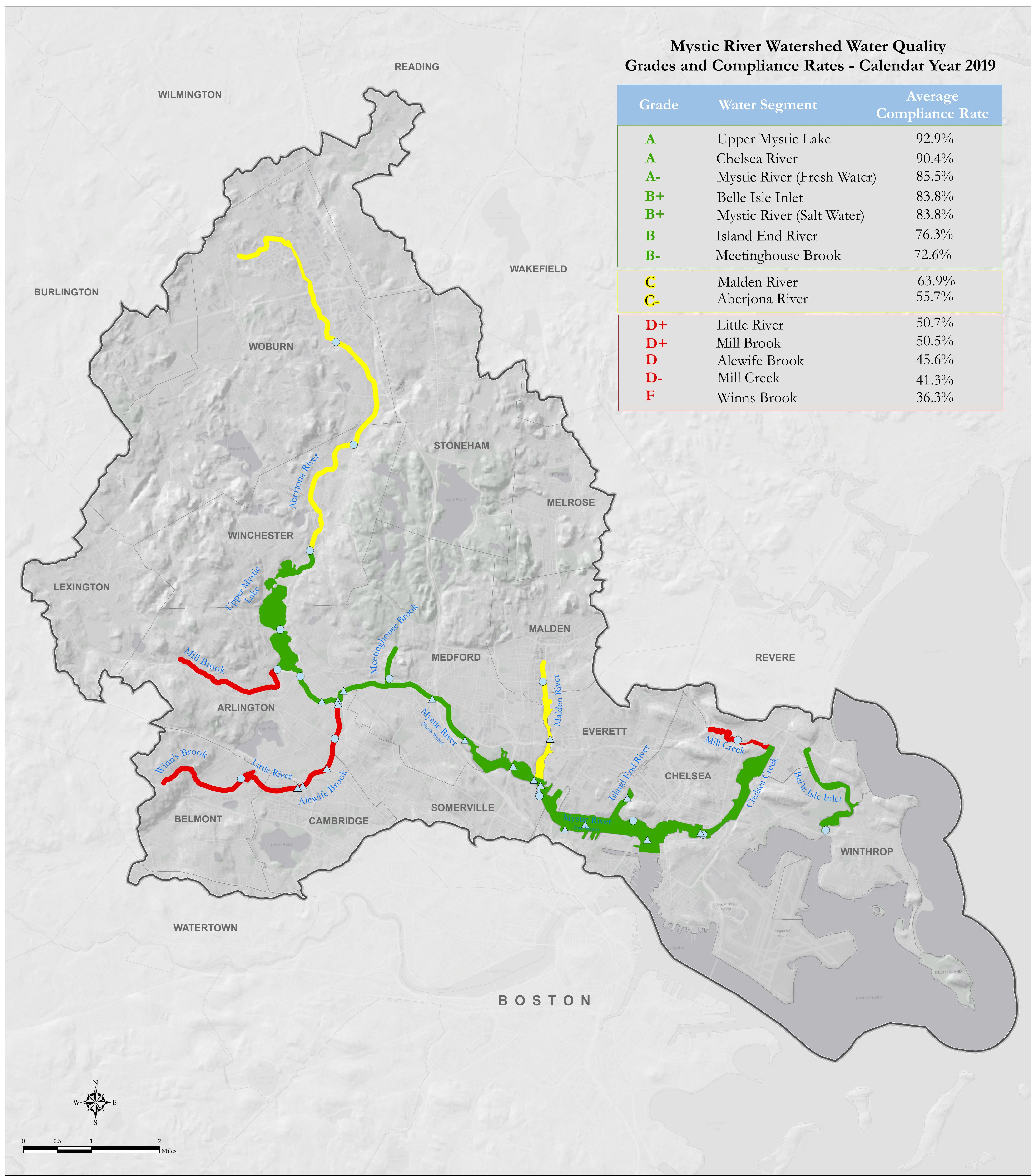
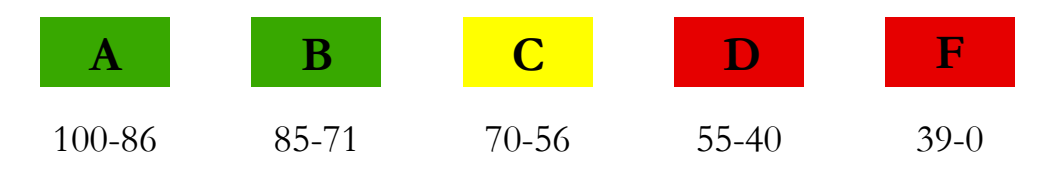


Mystic River Watershed Water Quality Grades and Compliance Rates - Calendar Year 2019

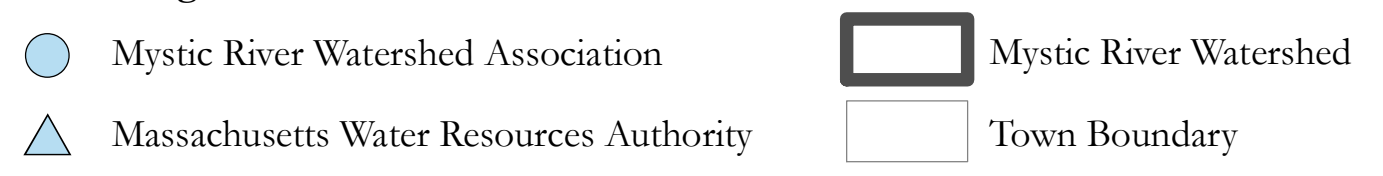
Grade	Water Segment	Average Compliance Rate
A	Upper Mystic Lake	92.9%
A	Chelsea River	90.4%
A-	Mystic River (Fresh Water)	85.5%
B+	Belle Isle Inlet	83.8%
B+	Mystic River (Salt Water)	83.8%
B	Island End River	76.3%
B-	Meetinghouse Brook	72.6%
C	Malden River	63.9%
C-	Aberjona River	55.7%
D+	Little River	50.7%
D+	Mill Brook	50.5%
D	Alewife Brook	45.6%
D-	Mill Creek	41.3%
F	Winns Brook	36.3%



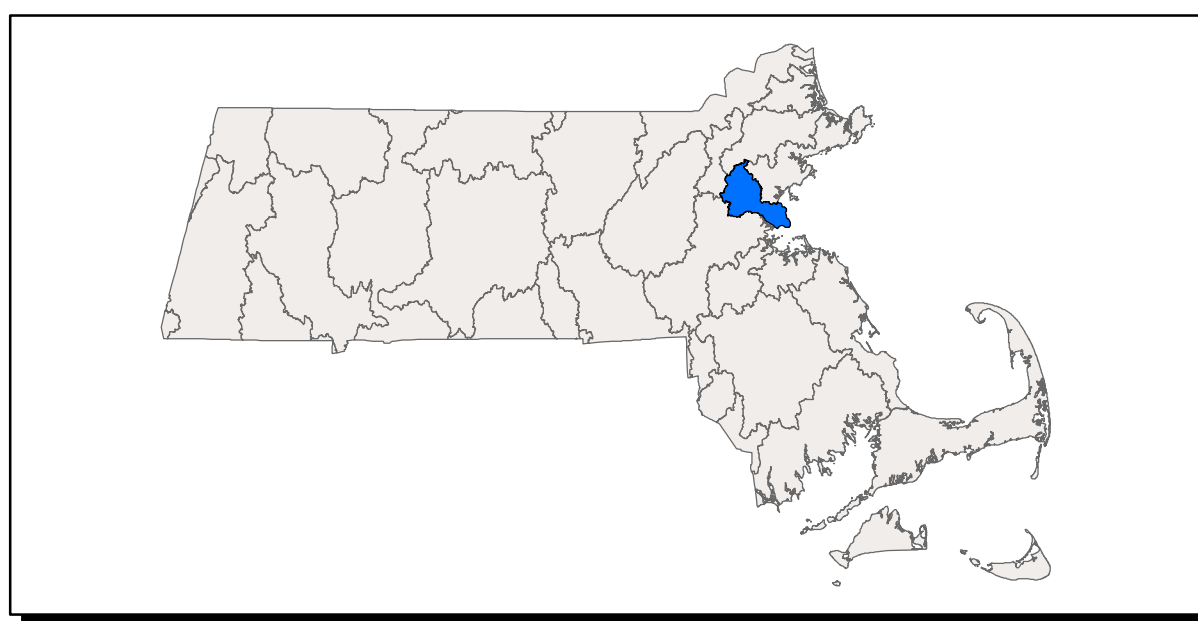
Average Compliance Rates for Swimming and Boating Standards



Monitoring Points



2019 Mystic River Watershed Report Card
(based on 2017-2019 bacterial data)



Data Sources: Mystic River Watershed Association, U.S. EPA, Massachusetts Water Resources Authority, MassGIS.
Basemap: Canvas/World Light Gray Base © ESRI and its data suppliers. EPA Region 1 GIS Center map #12905 7/15/2020