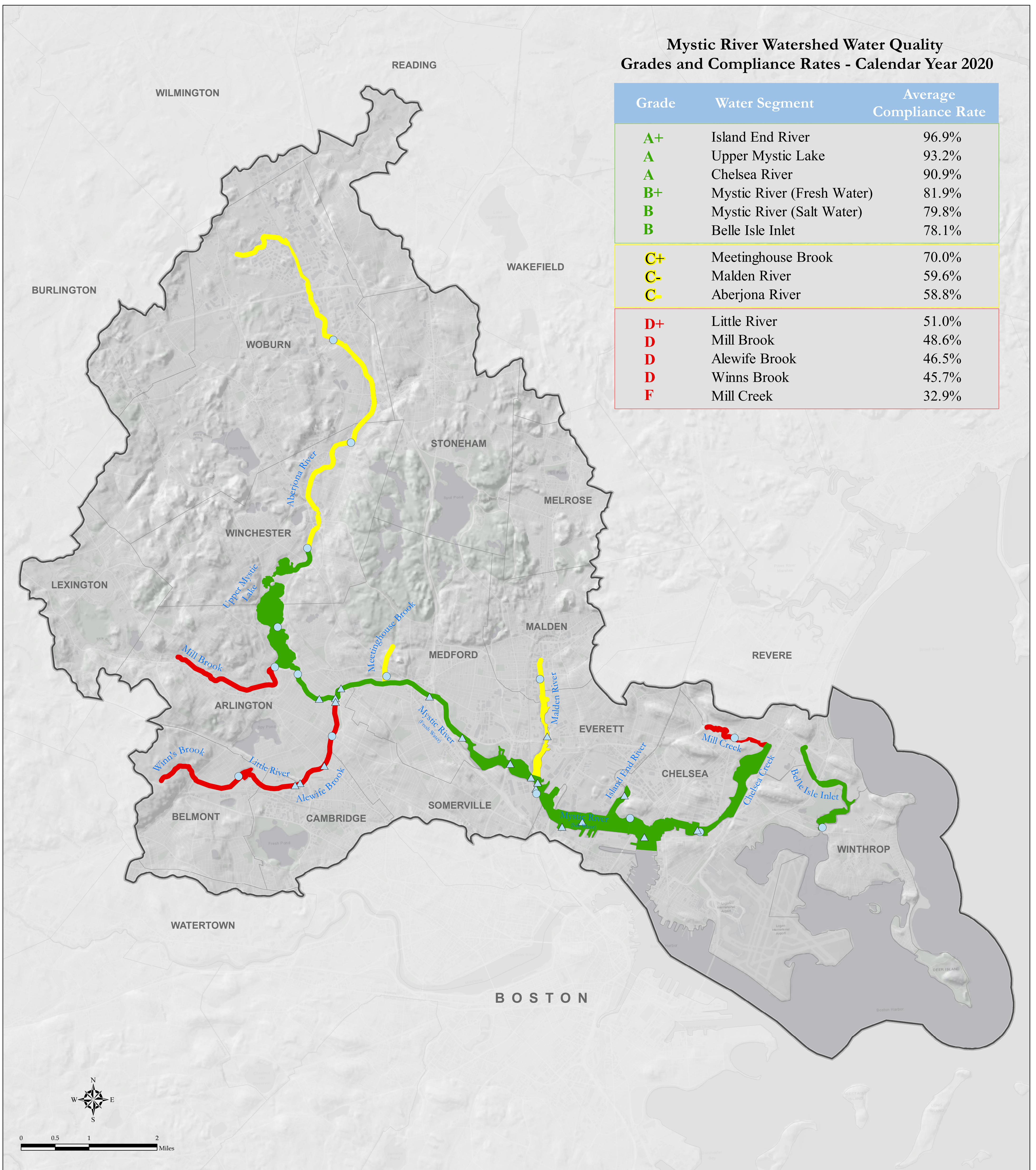


### Mystic River Watershed Water Quality Grades and Compliance Rates - Calendar Year 2020

Grade	Water Segment	Average Compliance Rate
A+	Island End River	96.9%
A	Upper Mystic Lake	93.2%
A	Chelsea River	90.9%
B+	Mystic River (Fresh Water)	81.9%
B	Mystic River (Salt Water)	79.8%
B	Belle Isle Inlet	78.1%
C+	Meetinghouse Brook	70.0%
C-	Malden River	59.6%
C	Aberjona River	58.8%
D+	Little River	51.0%
D	Mill Brook	48.6%
D	Alewife Brook	46.5%
D	Winns Brook	45.7%
F	Mill Creek	32.9%



#### Average Compliance Rates for Swimming and Boating Standards

Grade	A	B	C	D	F
Compliance Rate Range	100-86	85-71	70-56	55-40	39-0

#### Monitoring Points

- Mystic River Watershed Association
- Massachusetts Water Resources Authority
- Mystic River Watershed
- Town Boundary

Data Sources: Mystic River Watershed Association, U.S. EPA, Massachusetts Water Resources Authority, MassGIS. Basemap: Canvas/World Light Gray Base © ESRI and its data suppliers. EPA Region 1 GIS Center map #13390, 7/14/2021

## 2020 Mystic River Watershed Report Card

(based on 2018-2020 bacterial data)

