



American Contract Systems

Temple Terrace, FL

Ethylene Oxide Protection Measures Installed

October 2023

Introduction

The U.S. Environmental Protection Agency would like to provide an update to the community concerning measures taken to limit the release of the chemical ethylene oxide (EtO) from American Contract Systems, Inc. located at 7802 East Telecon Pkwy in Temple Terrace, FL 33637. The American Contract Systems facility is a commercial sterilizer that EPA identified as having contributed to an elevated level of risk due to its emissions of EtO into the air.

Earlier this year, using data from operations prior to July of 2023, the EPA determined that Temple Terrace neighborhoods in the vicinity of the American Contract Systems facility may have an elevated lifetime cancer risk. The risk decreases significantly as you move away from the American Contract Systems facility.

Emission Control Measures Update

In July 2023, the American Contract Systems facility completed the installation of three dry bed scrubbers to control and reduce air pollution associated with the facility's medical equipment sterilization activities. **Preliminary data shows these controls are about 99.8% effective in reducing EtO emissions vented from the facility into the air.** These newly installed controls are anticipated to reduce EtO emissions from the facility from approximately 5 pounds per day to less than 0.05 pounds per day. The Florida Department of Environmental Protection and Environmental Protection Commission of Hillsborough County inspected the facility and oversaw the preliminary testing of the scrubbers to ensure their effectiveness. The facility performed a full stack test using an EPA approved method and found the controls fully operational.

EPA has re-modeled the lifetime residential cancer risks associated with the American Contract Systems – Temple Terrace facility now that the new controls are operational. As a result of the decrease in EtO emissions emitted from the facility, the size of the risk area modeled above the 100 in 1 million threshold for residents has been reduced and now covers a much smaller area (see the blue area in the revised risk map on page 2).

EPA is sharing this information because communities have a right to know about emissions that could affect their health and well-being. The EPA will host a community meeting on **November 2, 2023**, to provide additional details. Please go to www.epa.gov/fl/temple-terrace-fl-american-contract-systems for more information about the meeting. A recording of the meeting will be available on this website after the meeting.

Public Meeting

6:00 - 8:00 p.m.

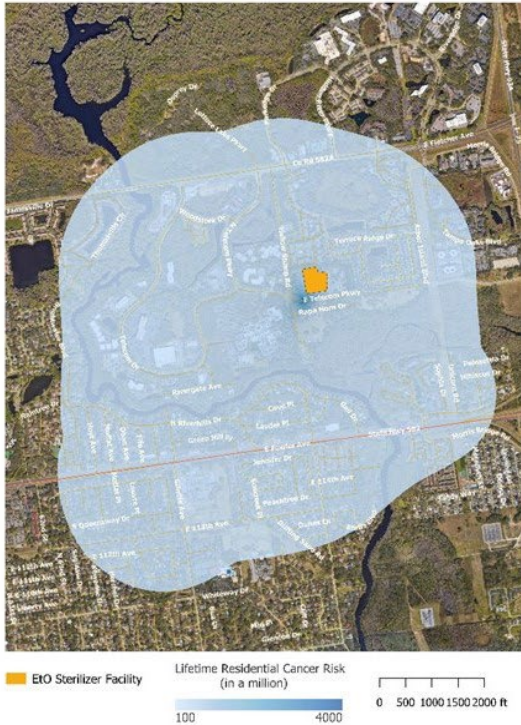
November 2, 2023

Hillsborough Community College
Dale Mabry Campus
Learning Resource Center, Room 106
4001 W. Tampa Bay Blvd.
Tampa, FL 33614

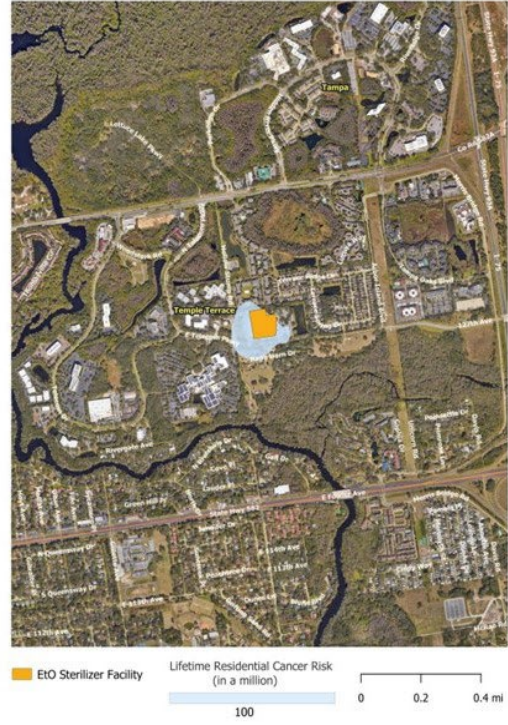
More info on the meeting:

www.epa.gov/fl/temple-terrace-fl-american-contract-systems

Lifetime Residential Cancer Risks – EtO Sterilization
American Contract Systems – Temple Terrace, FL



EPA Modeled Risk Map – BEFORE
installation of air pollution control devices



EPA Modeled Risk Map – AFTER
installation of air pollution control devices

Data suggests that EtO may also pose risks to people who work, or attend school or daycare, or otherwise spend a significant amount of time in the blue area. EPA did not calculate these risks that are specific to this facility.

The EPA's Proposed Actions

In April 2023, EPA proposed actions that are expected to reduce risks in communities and for workers. The EPA has proposed new actions to limit EtO emissions from commercial sterilizers and sought input from the public. The comment periods for the commercial sterilizer proposed rule and the protections for workers who use EtO to sterilize products closed on June 27, 2023. **EPA is currently in consideration of the public comments received and is working towards finalizing these actions.** For more information on the sterilizer rule and decision, please visit www.epa.gov/eto.

What is EtO?

EtO is a colorless, odorless gas that is primarily used for sterilization purposes. The EPA has regulated EtO emissions for 30 years, however in 2016, new scientific information revealed that EtO is more toxic than previously understood. This prompted the EPA to conduct nationwide analyses and intensive data collection, which have revealed that certain communities near commercial sterilizers could have elevated cancer risks due to lifetime exposures to EtO. Inhalation of EtO at elevated levels *over a lifetime* can increase a person's risk of getting cancer. However, single-day exposures to the concentrations found in residential communities are not an immediate threat to an individual's health.

Esta información se puede encontrar en español en www.epa.gov/fl/temple-terrace-fl-american-contract-systems.

If you or someone you know would like to be added to EPA's distribution list to receive future updates, please contact Region4EtO@epa.gov or 1-800-241-1754.