

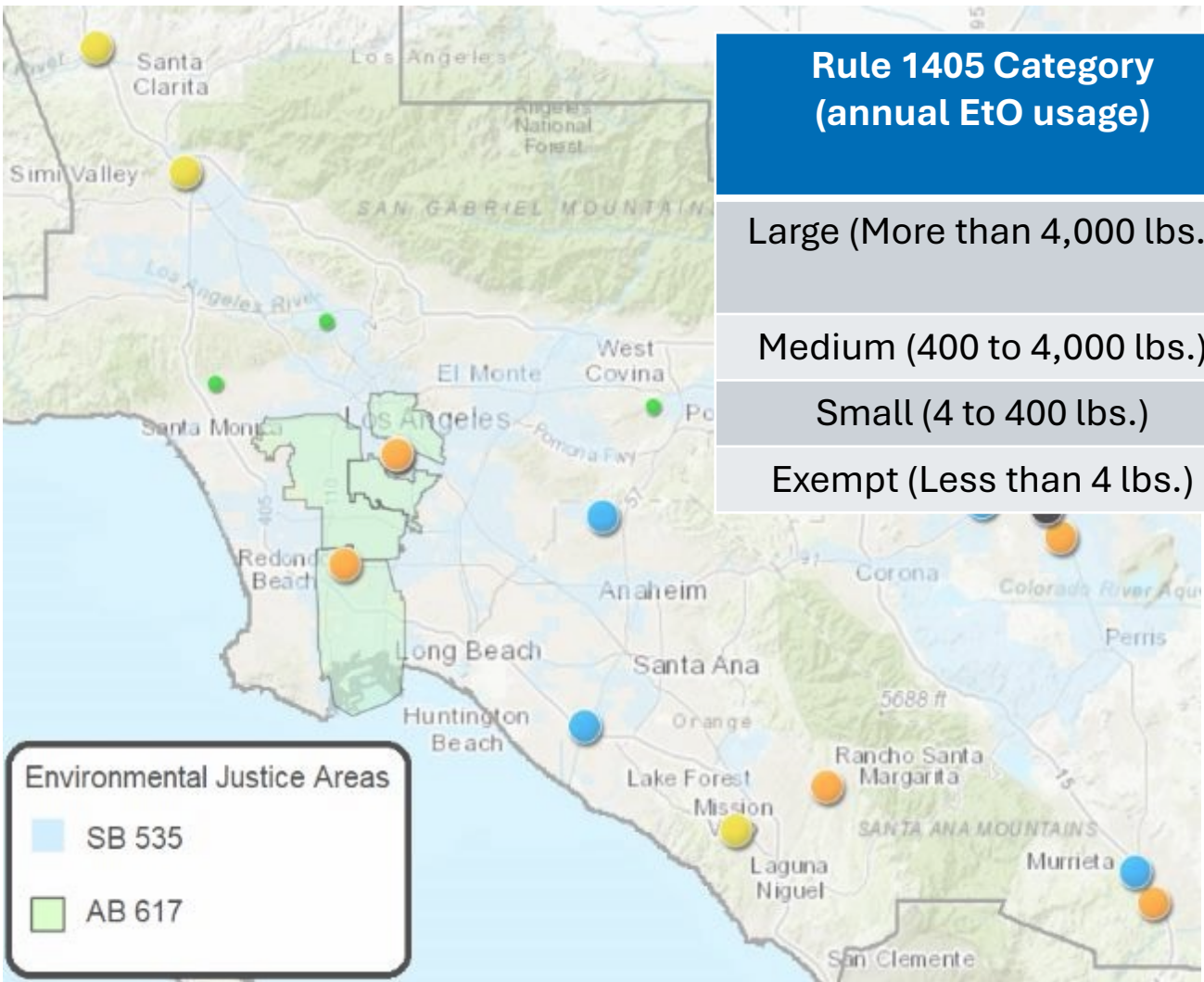
Two years of ethylene oxide measurements near three sterilization facilities in the South Coast Air Basin

Stephen Dutz
Monitoring & Analysis
South Coast Air Quality Management District

National Ambient Air Monitoring Conference
New Orleans, Louisiana
August 14, 2024



South Coast Air Basin Facilities



Rule 1405 Category (annual EtO usage)	Contract Sterilization	Medical Mfg.	Surgical or Veterinary	Educational or Zoological
Large (More than 4,000 lbs.)	7	0	0	0
Medium (400 to 4,000 lbs.)	0	3	0	0
Small (4 to 400 lbs.)	0	1	2	0
Exempt (Less than 4 lbs.)	0	0	0	3

- Investigation focused on larger facilities
- Facilities supply devices to larger region
- Stationary ambient monitoring (3 large facilities)



Initial Investigation

- Site Visit to Vernon facility in March 2022
- Facility had installed fugitive EtO control without permits
 - Facility was venting general warehouse and process areas with building exhaust fans
- Ethylene Glycol odors near control equipment
 - Wet Scrubber – Tank Hatch opened
- EPA Method TO-15A grab sample indicated elevated EtO concentrations offsite
- Stationary ambient monitoring at Vernon facility commenced on July 10, 2022
 - Elevated ambient levels detected at fenceline

Current OEHHA
Guidance

MICR = 100 in a million

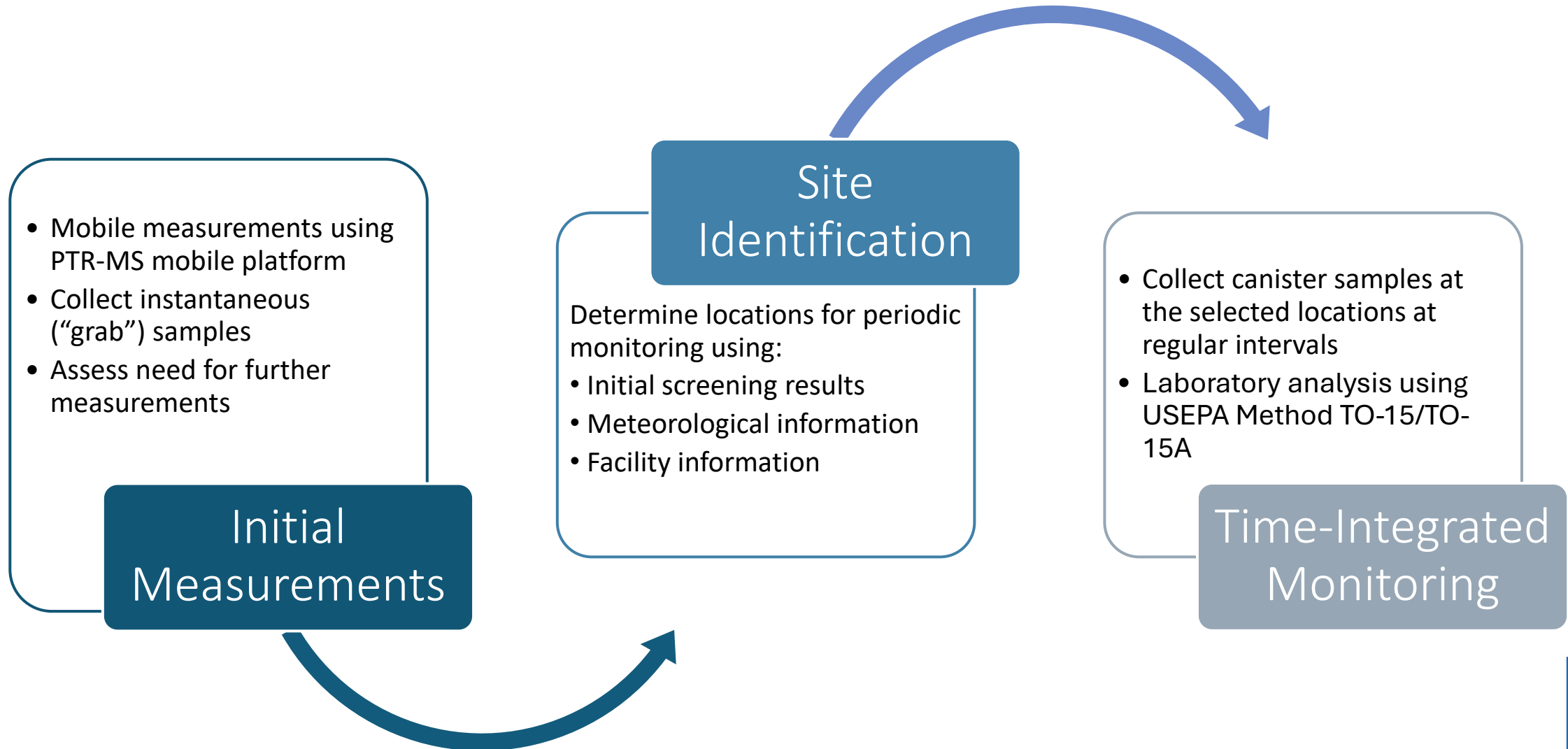
Offsite Worker = 3.18 ppb

Acid-Water (Wet) Scrubber

- Uses sulfuric acid to convert EtO into ethylene glycol
- Capable of achieving 99.9% control efficiency
- Treats high concentration EtO
- Used for chamber purge cycle emissions, leaking drum cabinets
- Exhaust stream (ppm)



Methodical EtO Monitoring Approach



Exploratory Mobile Measurements

- Proton Transfer Reaction – Mass Spectrometer (PTR-MS) Mobile Platform
 - Real-time detection of Volatile Organic Compound (VOC) signals, including signals associated with EtO
- Measure near the facility in upwind and downwind areas, and in nearby communities
- If enhanced EtO-related signals are detected, grab samples are collected for confirming and quantifying EtO levels using laboratory analysis



Canister Sampling Options

Grab (Instantaneous) Samples

- Sampling spans < 2 minutes
- Collected as needed
- Used to complement mobile measurements



Time-Integrated Samples

- Collection is typically 24 hours
- For periodic monitoring at fixed sites
- Recurring frequency (e.g., 1 in 3 days)

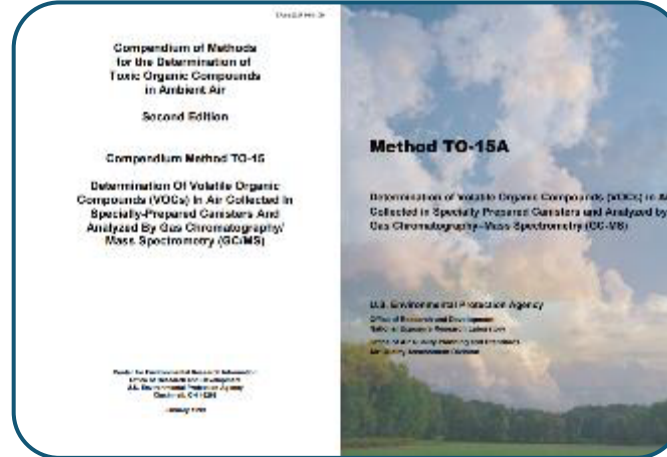


Laboratory Analysis



Samples

Silica-lined canisters provide most inert environment for VOCs



Method

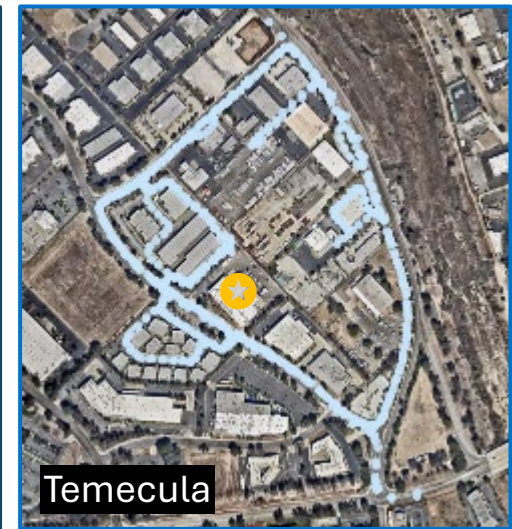
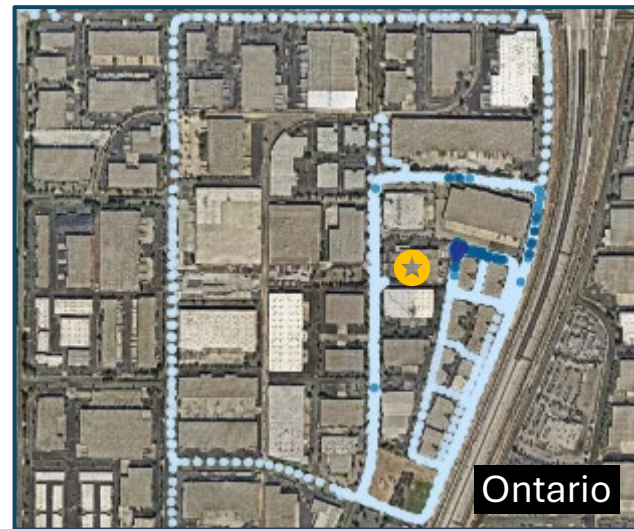
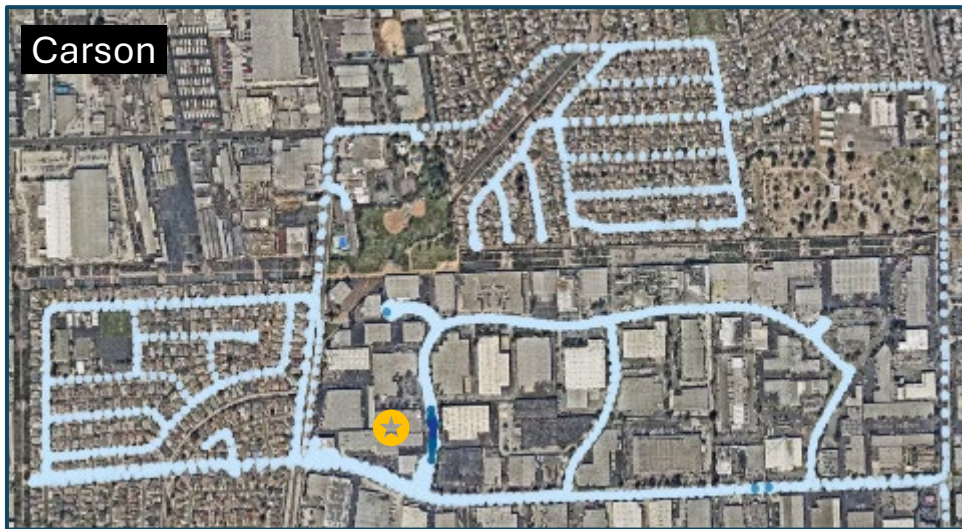
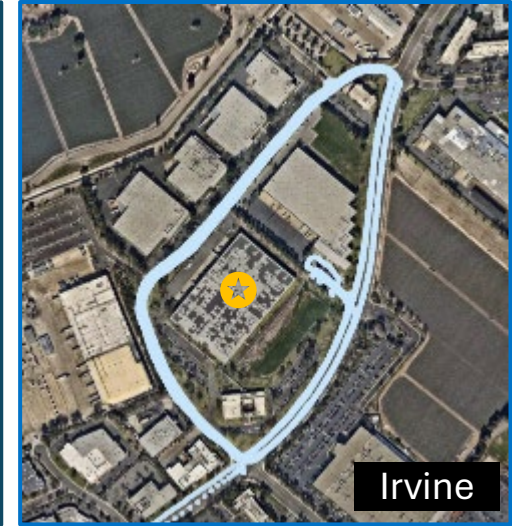
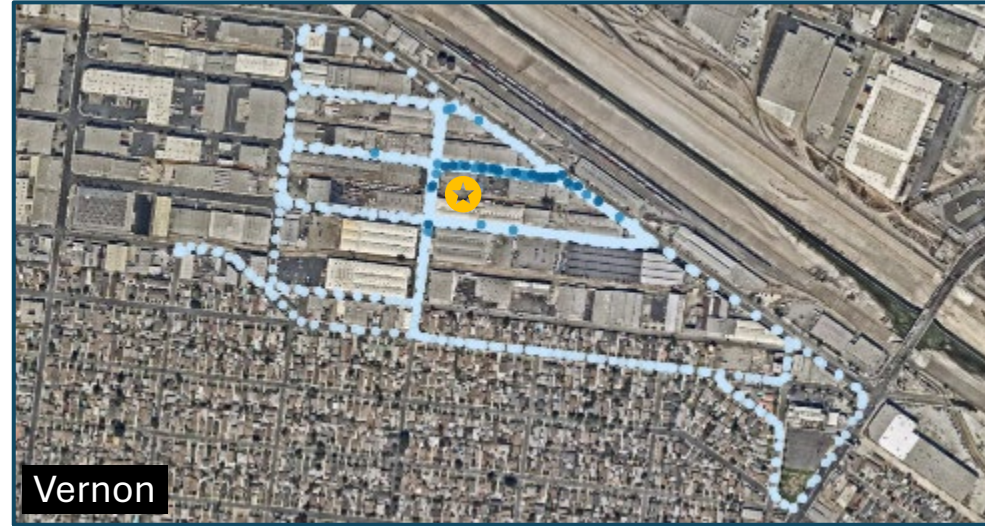
U.S. EPA Compendium TO-15/TO-15A for VOCs



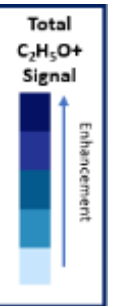
Instrument

Gas Chromatograph-Mass Spectrometer (GC-MS) with pre-concentrator

Survey Mobile Measurements

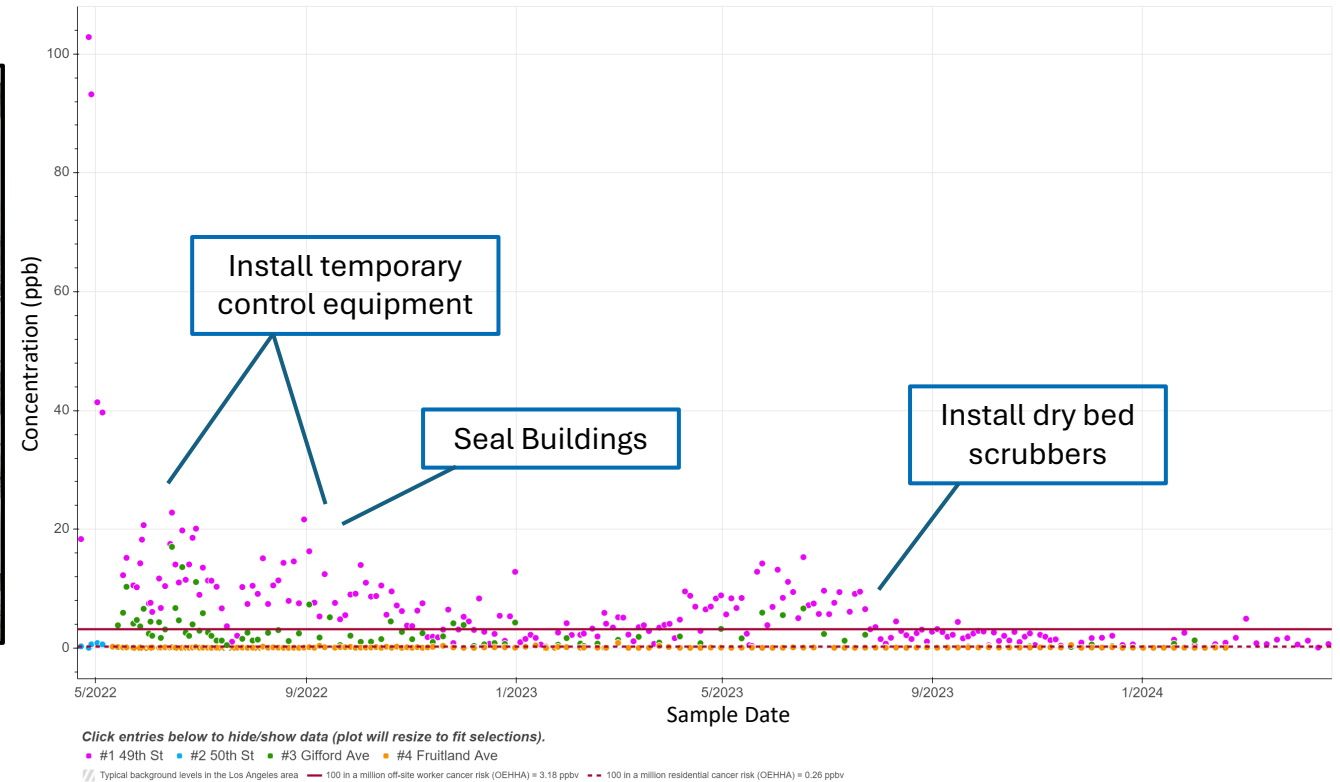


Monitoring Site Identification



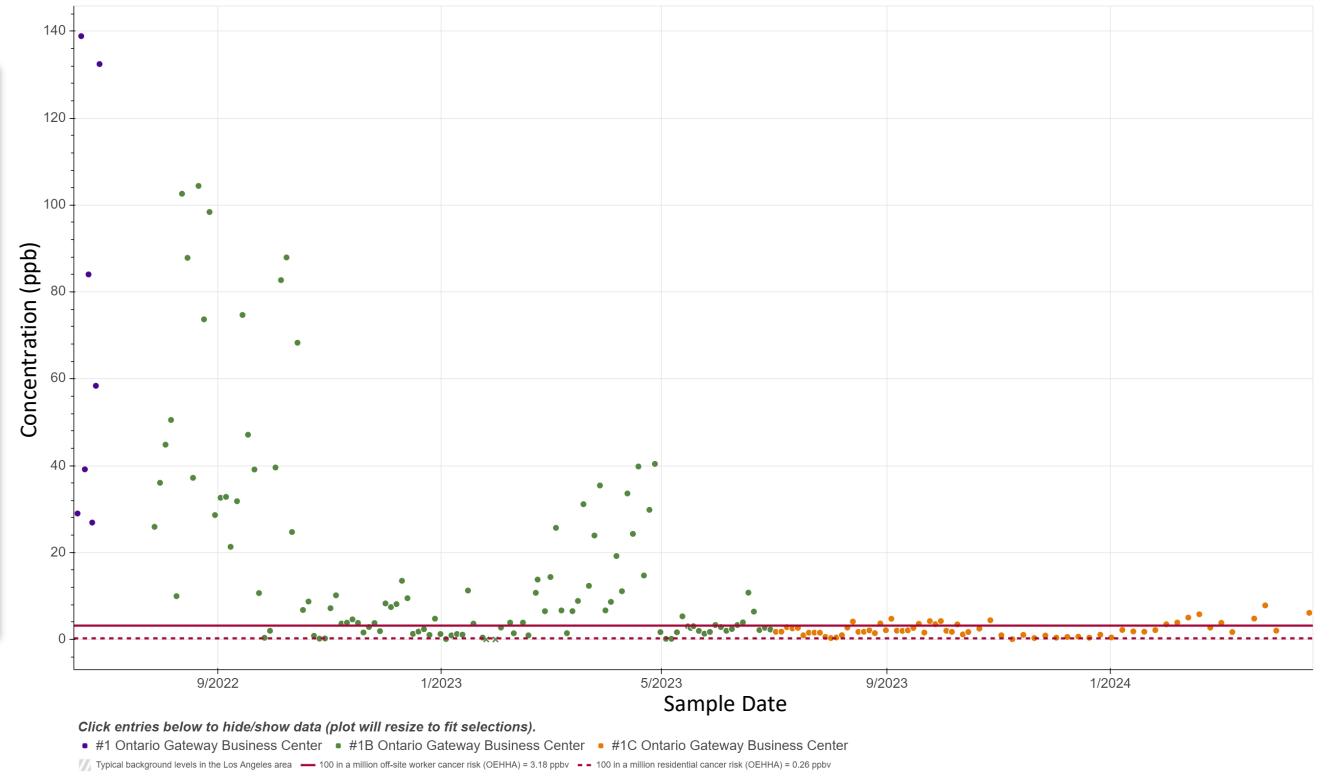
Vernon Facility

Time-Integrated Sampling Efforts



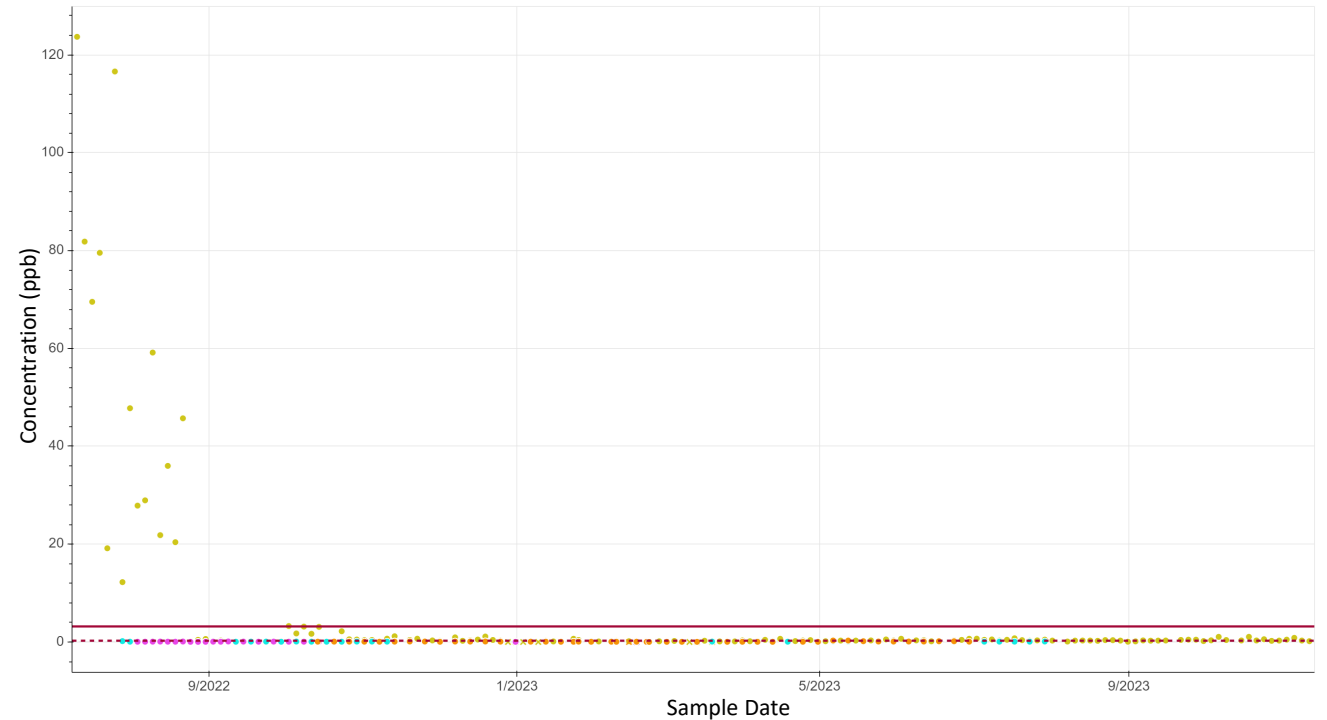
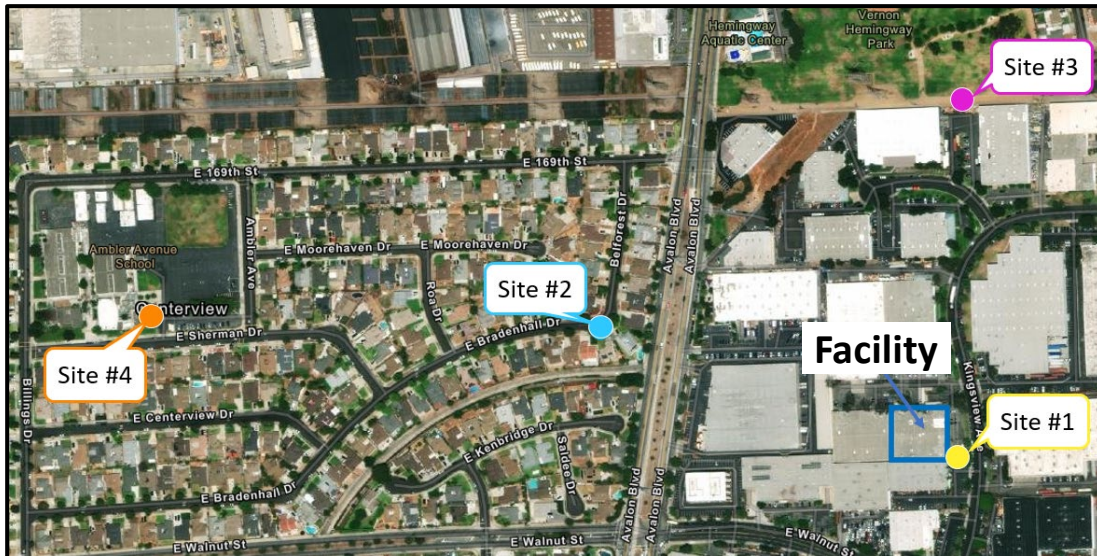
Ontario Facility

Time-Integrated Sampling Efforts



Carson Facility

Time-Integrated Sampling Efforts



Click entries below to hide/show data (plot will resize to fit selections).
 #1 Kingsview Ave #2 Bradenhall Dr #3 Hemingway Park #4 Ambler Ave Elementary School
 Typical background levels in the Los Angeles area 100 in a million off-site worker cancer risk (OEHHA) = 3.18 ppbv 100 in a million residential cancer risk (OEHHA) = 0.26 ppbv

Summary of Monitoring Efforts

- Methodical approach developed to monitor EtO levels near emission sources
 - 1) Exploratory mobile measurements
 - 2) Canister sampling followed by laboratory analysis using TO-15A
- Mobile measurements conducted near 14 facilities
 - Identified 4 facilities (3 locations) for additional monitoring
- Data identified elevated EtO levels near some large facilities
 - Elevated levels of EtO at off-site worker monitoring sites
 - EtO levels at nearby residential communities within typical background levels

Additional Findings

- EtO detected in uncontrolled areas of building (ppb and ppm)
 - EtO affinity for conditions in Pretreatment rooms
 - Building ventilation
- Transport from Chamber to Aeration room
- Continued off gassing after aeration. Post-aeration handling
- Ambient concentrations appear to correlate with production



Next Steps

- South Coast AQMD Rule 1405 – "Control of Ethylene Oxide Emissions from Sterilization and Related Operations"
 - Sterilization Facilities and Warehouses
 - Fenceline Air Monitoring Provision
 - Mobile and Stationary Components
 - Permanent Total Enclosure
 - CEMS Certification Program
- Pallet Off-gassing Study

For Additional Information

Email: sdutz@aqmd.gov

Web: www.aqmd.gov

Follow us @SouthCoastAQMD

