



Eaton and Palisades Fire Staging Areas

The U.S. Environmental Protection Agency (EPA) and the Department of Toxic Substances Control (DTSC) are assessing and removing household hazardous materials (HHM) from properties affected by the Eaton and Palisades fires as a part of Phase 1.

EPA collects household hazardous materials from burn areas and brings them to controlled environments called **staging areas. Once there, EPA safely packages and transports these materials to proper disposal facilities.**

Four temporary staging areas have been set up to safely sort and package these materials.



HHM is sorted into similar materials streams at staging areas



Empty canisters are marked and collected in front of cleared properties to be picked up at a later date

Eaton Fire Staging Areas:

- 15701 West Foothill Blvd. in Azusa (Lario)
- 1456 East Mendocino St. in Altadena (Altadena Driving Range)

Palisades Fire Staging Areas:

- Intersection of Pacific Coast Highway and Temescal Canyon Rd (Will Rogers State Beach Parking Lot)
- Intersection of Pacific Coast Highway and Topanga Canyon Blvd. (Topanga)

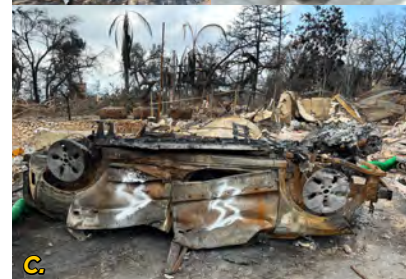
Materials like paint, aerosols, oils, batteries, pesticides, cleaners and solvents are collected and packaged from properties.

The area will be left as we found it.

See the flip side of this fact sheet for detailed information on safety and process.

Handling lithium-ion batteries:

- Lithium-ion batteries are a unique high-hazard material that EPA is safely removing from burned electric and hybrid vehicles and properties.
- Trained crews use heavy machinery to remove the tops of burned vehicles and flip them over to expose their battery packs. Workers shovel the batteries from the vehicles into metal drums for safe shipment to a temporary staging area.
- Larger energy storage batteries (with fire-damaged cases) are checked by an electrician and wrapped for safe transport to a specialized part of the HHM staging areas.
- At the staging area, lithium-ion batteries are de-energized in saline solution. Then, batteries are either:
 - flattened by drum rollers in contained, lined areas, or
 - shredded directly into steel barrels.
- At this point, the de-energized, flattened batteries no longer hold a charge and can be shipped offsite for disposal.



A. An excavator opens the battery pack on an electric vehicle
B. Crews contain batteries in lined drums for safe transport to staging areas
C. Crews mark electric vehicles with white lightning bolts once the batteries are removed

THE ROAD TO DISPOSAL

Los Angeles Wildfires



FOR QUESTIONS ABOUT EPA'S PHASE 1 WORK:

Visit our EPA website: epa.gov/california-wildfires
Contact our hotline: 1-833-R9-USEPA (1-833-798-7372)
Email: EPALAWildfiresInfo@epa.gov

HAVE HEALTH QUESTIONS?

Visit the L.A. Department of Public Health website at publichealth.lacounty.gov/media/Wildfire or 833-540-0473



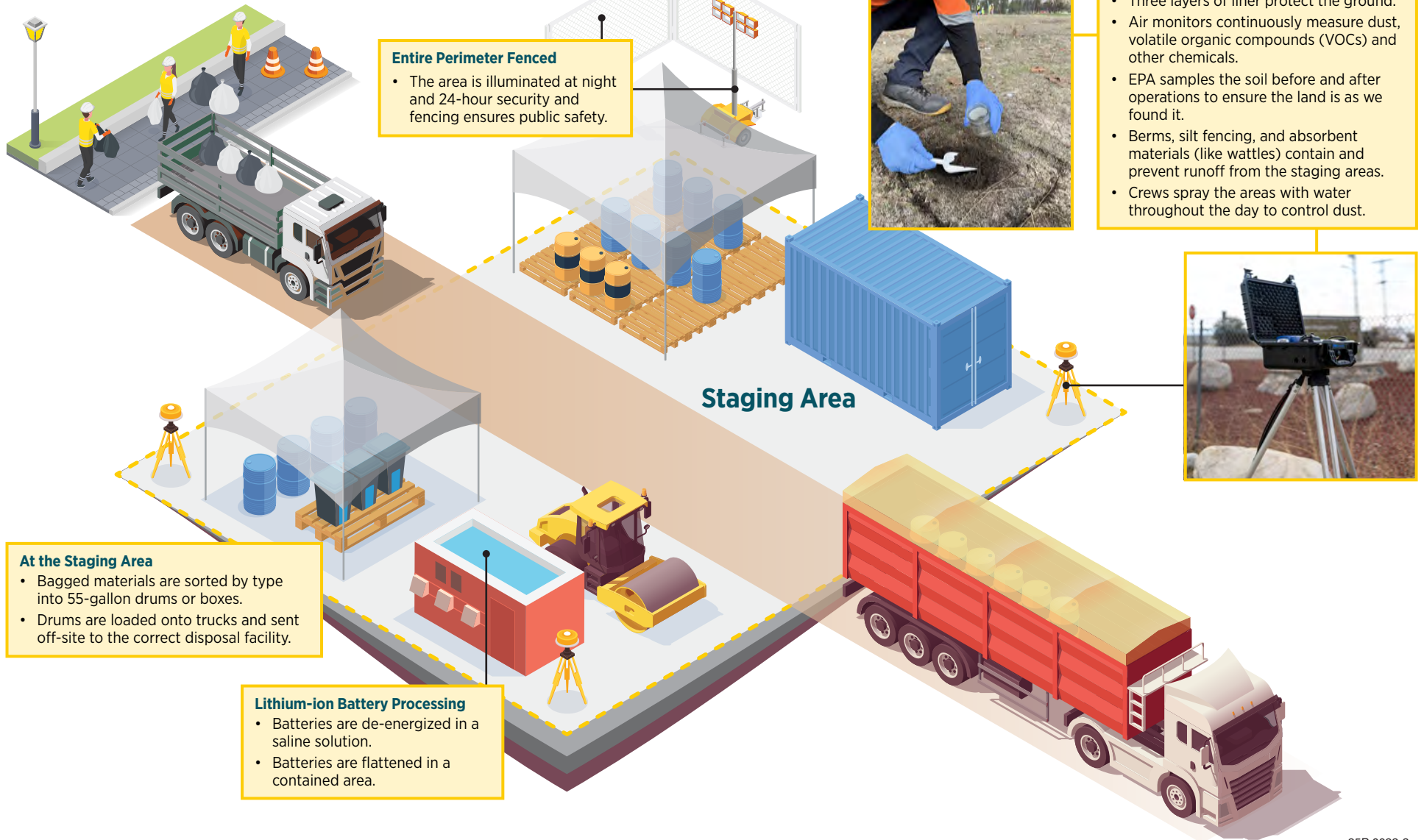
Household Hazardous Materials Removal (HHM), Packing, and Transport:

- EPA and DTSC collect, sort, and double-bag HHM from burned areas. Bags are transported on trucks to the staging area.
- Specialized hazardous materials workers wear appropriate personal protective equipment (PPE) when handling and sorting materials.



THE ROAD TO DISPOSAL

Los Angeles Wildfires



Entire Perimeter Fenced

- The area is illuminated at night and 24-hour security and fencing ensures public safety.

Security Measures

- Three layers of liner protect the ground.
- Air monitors continuously measure dust, volatile organic compounds (VOCs) and other chemicals.
- EPA samples the soil before and after operations to ensure the land is as we found it.
- Berms, silt fencing, and absorbent materials (like wattles) contain and prevent runoff from the staging areas.
- Crews spray the areas with water throughout the day to control dust.



At the Staging Area

- Bagged materials are sorted by type into 55-gallon drums or boxes.
- Drums are loaded onto trucks and sent off-site to the correct disposal facility.

Lithium-ion Battery Processing

- Batteries are de-energized in a saline solution.
- Batteries are flattened in a contained area.